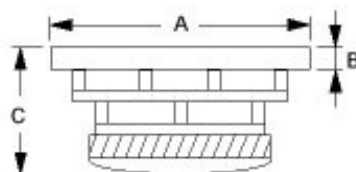


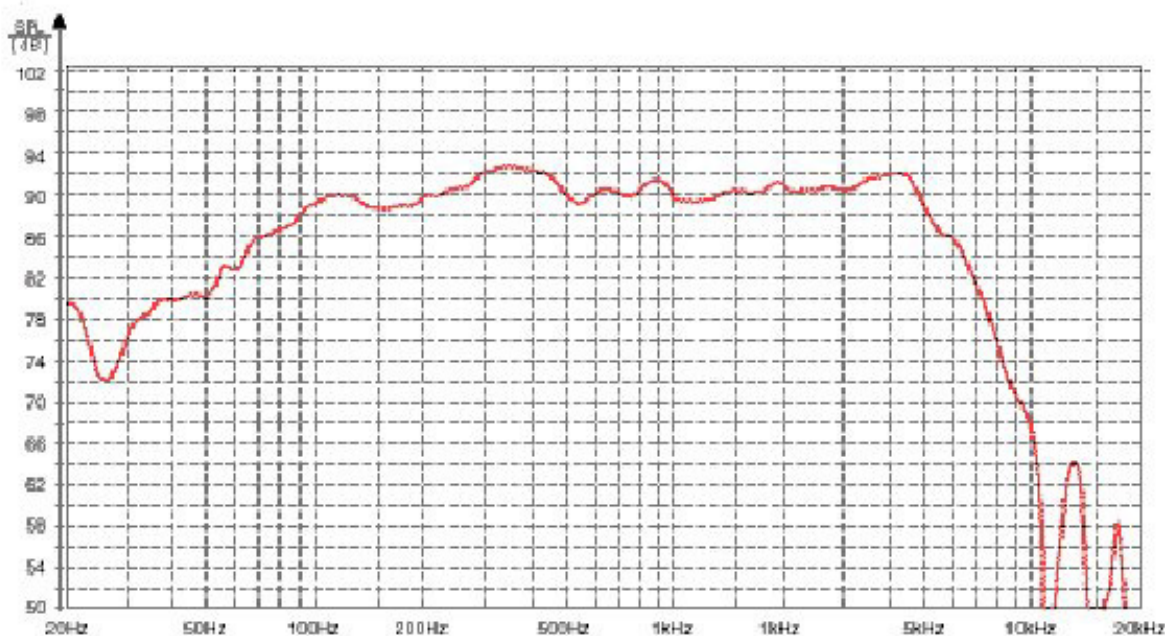


# 4H521306

<b>Effective Cone Area</b>	<b>96 Cm<sup>2</sup></b>
<b>Nominal Impedance</b>	<b>8 Ohms</b>
<b>Resonance Frequency</b>	<b>41 Hz</b>
<b>Equivalent Air Volume</b>	<b>23 Ltrs.</b>
<b>Mechanical Q Factor</b>	<b>1.45</b>
<b>Electrical Q Factor</b>	<b>0.36</b>
<b>Total Q Factor</b>	<b>0.29</b>
<b>Acceleration Factor</b>	<b>667</b>
<b>Nominal Power Handling</b>	<b>120 W</b>
<b>Sensitivity</b>	<b>89 dB</b>
<b>Frequency Response</b>	<b>44-5500 Hz</b>
<b>DC Resistance</b>	<b>5.3 Ohms</b>
<b>Compliance</b>	<b>1.7826 mm/Nm</b>
<b>Mechanical res.</b>	<b>1.502</b>
<b>VC Inductance</b>	<b>0.36 mH</b>
<b>Moving Mass</b>	<b>8.45 g</b>
<b>Force Factor</b>	<b>5.66</b>
<b>Linear Excursion (X-max)</b>	<b>4 mm</b>
<b>Max Excursion (P-P)</b>	<b>32 mm</b>



**A = 155 mm**  
**B = 8 mm**  
**C = 88 mm**  
**Weight = 2.9 kg**



4H520613