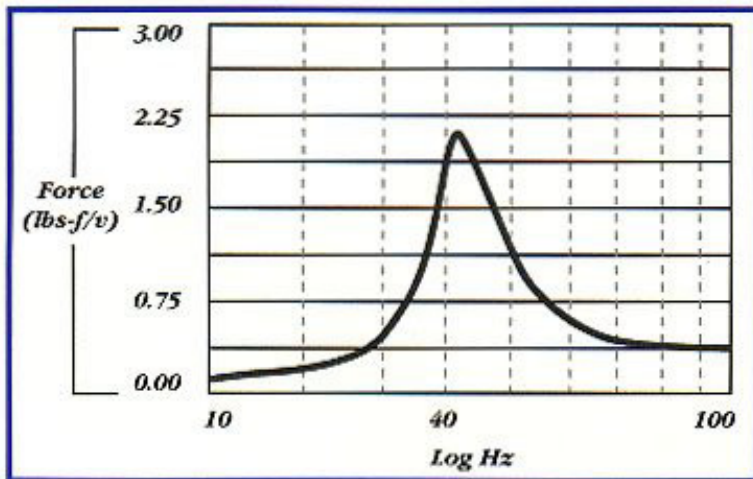


Specifications:**Pro Bass Shaker**

Model Number	AST-2B-4
Suggested Retail Price Per Pair	\$.239
Frame Size	5.4" W x 2.2" H
Force, Peak	30 lbf (132 N)
Effective Impedance	4 Ohms
Power, Continuous50 Watts RMS
Power, Max75 Watts RMS
Height	2.2"
Diameter	6.2"
Weight	3.0 lb.
Resonance Frequency (fo)	40 Hz
Usable Frequency Range	20-80 Hz
UPC Code	7-94002-30770-9
QTY/Master Carton	8 Pairs
Wt./Master Carton	55.24 Lbs.
Dimension of Master Carton	15.75" L x 15.8125" W x 9.75" H
Master Carton/Pallet24 M/C (192 Pairs)

Bass Shaker Frequency Response

- A two-channel 50-100 Watt RMS/channel amplifier is recommended with one Bass Shaker operating from each channel.
- LPF (low pass filter), if used, should be set to 100 Hz.
- For best results, drive both Bass Shakers with same mono signal.
- Both Bass Shakers in an installation should be wired in phase. The Bass Shaker wiring is coded for phasing.
- Bass Shakers perform best when mounted rigidly to a compliant surface in the vehicle. The pan beneath the seats is usually an ideal location for mounting.
- Bass Shakers can be combined with a subwoofer.
- The 25 Watt RMS/channel Bass Shaker and 50 Watt RMS/channel Pro Bass Shaker are sold in pairs and are available with or without an optional two-channel Aura 50 Watt RMS/channel amplifier.