

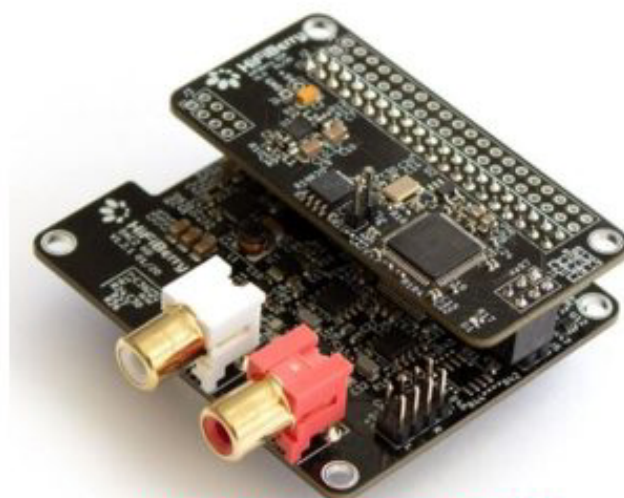


HiFiBerry DAC2 HD

The HiFiBerry DAC2 HD is a high-end digital-to-analog converter for the Raspberry Pi 3 and 4, based on our proven DAC+Pro. This new board is designed for demanding audiophiles who require the best possible performance.

Features:

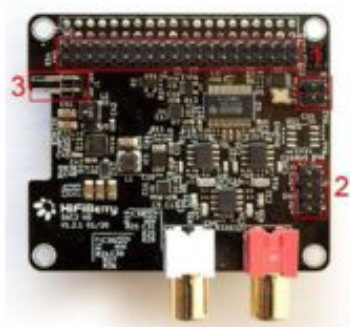
- Dedicated 192kHz/24bit high-quality Burr-Brown DAC
- Custom current-to-voltage output stage with high-end filtering
- Four ultra-low-noise linear voltage regulators for optimal audio performance
- Low-jitter clock for optimized performance (independent from Raspberry Pi clock sources)
- Hardware volume control for DAC. You can control the output volume using "alsamixer" or any application that supports ALSA mixer controls.
- Supports HiFiBerry DSP add-on module
- Connects directly to the Raspberry Pi, no additional cables needed
- No soldering, you just plug it onto the Raspberry Pi.
- Compatible with all Raspberry Pi models with a 40-pin GPIO connector
- Directly powered from the Raspberry Pi, no additional power supply required
- HAT compliant, EEPROM for automatic configuration
- Gold plated RCA output connectors
- Included 4 M2.5x12mm spacers to mount the board onto the Raspberry Pi
- Requires at least Linux kernel 4.19.97



DSP add-on board not included, available as a separate purchase.

Connectors:

- 1) DSP Extension Header
- 2) Analog output, access to 5V
- 3) 5V from Pi



Specifications:

- Maximum output voltage: 2.1Vrms
- DAC signal-to-noise ratio: 123db typical
- DAC THD+N: -108db typical, 44.1kHz, -10dBFS
- Frequency response: 10Hz-70kHz -3dB
- Power consumption: <1W
- Sample rates: 44.1-192kHz
- Bits/sample: 16, 32