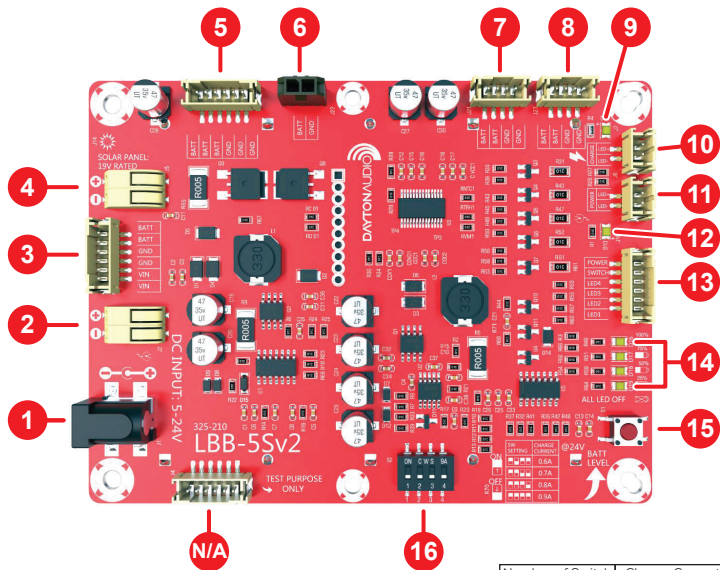


5 x 18650 Lithium Battery Charger Board/Module 21V with Charge Protection

Quick Start Wiring Guide

Model: LBB-5Sv2

1. 2.1x5.5mm 5-24 VDC input
2. WAGO 2060 5-24 VDC input
3. Expansion port
4. Solar panel input WAGO 2060 DC 15-24 V
5. Power output 21 VDC JST PH 2.5
6. Power output 21 VDC Molex micro-fit
7. Power output 21 VDC JST PH 2
8. Power output 21 VDC JST PH 2
9. LED indicator for charging
10. External charge indicator port
11. External power input indicator port
12. LED indicator for power input
13. External battery level status and control switch port
14. LED indicator for battery level status (estimated)
15. Battery level status switch
16. Charge current adjustment



Please note:
A power supply must be plugged into the holder for the battery board to have power output after installing or reinstalling batteries.

Number of Switch	Charge Current
0	0.50A
1	0.60A
2	0.70A
3	0.80A
4	0.90A