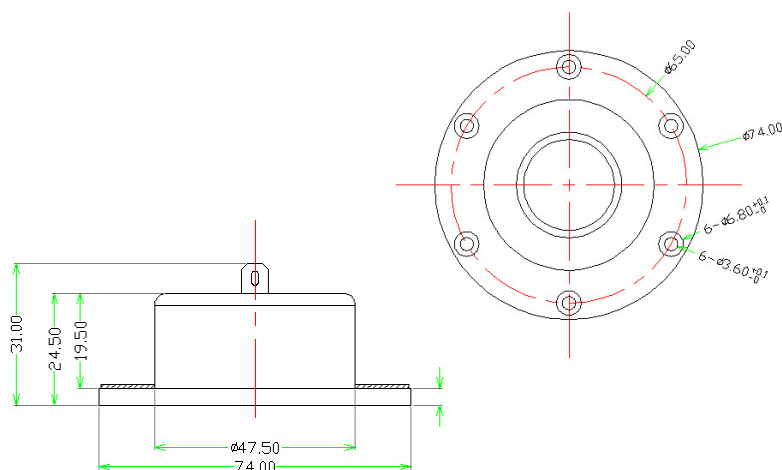




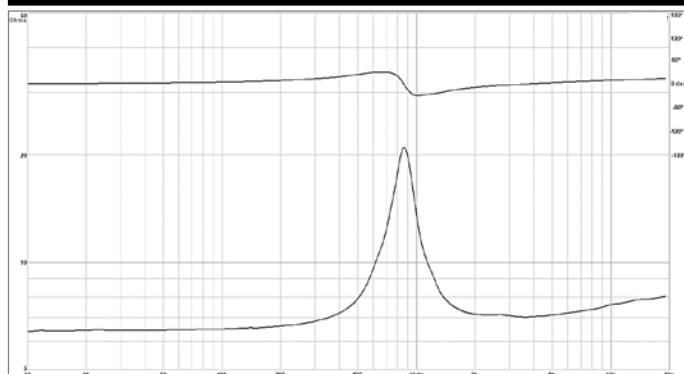
LD25X – 25mm XBL^2 Tweeter



Features

- XBL^2 split gap motor provides increased magnetic gap strength and size for lower distortion over a larger range of operation
- Copper cap reduces voice coil inductance and distortion, extending to end response
- 25mm silk dome provides smooth performance
- Anodized precision CNC faceplate with integrated gasket provides attractive high end look and feel

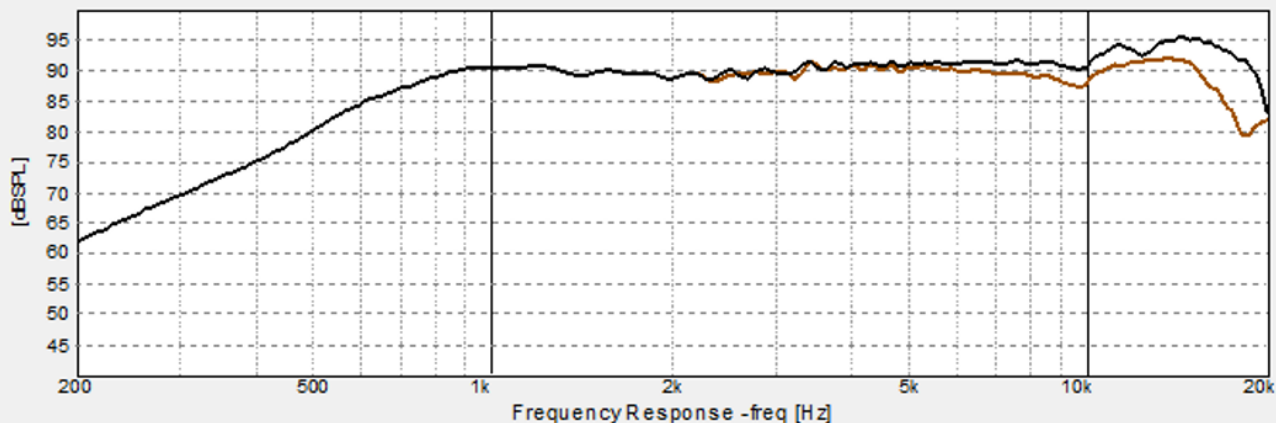
Impedance



Specifications

Impedance	8 Ohm
Re	6.4 Ohm
Le (at 10 kHz)	0.066 mH
Fs	865 Hz
Qms	4.21
Qes	1.85
Qts	1.28
Mms	0.18 g
Bl	2.76
Sd	5.3 cm ²
Vas	0.01 L
Cms	0.2 mm/N

Frequency Response – Infinite baffle, 2.83 V



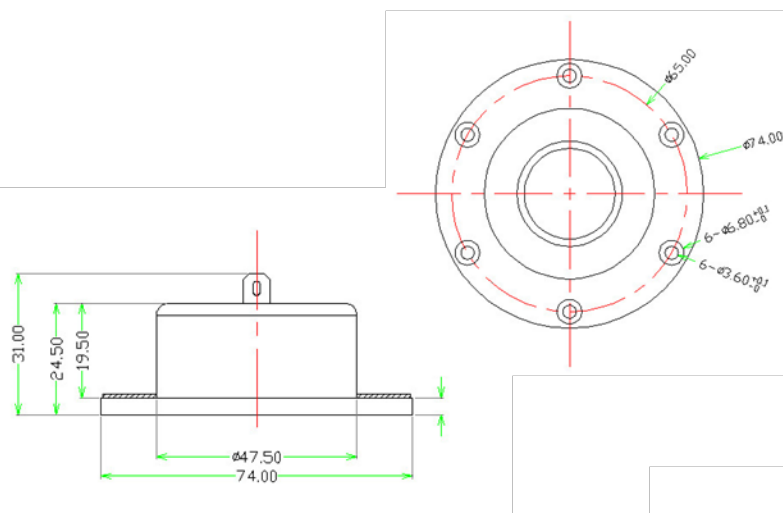
1.5dB/30

1.5dB/0

LD25X @ 2.83V/1m on infinite baffle 0 - 30 degrees



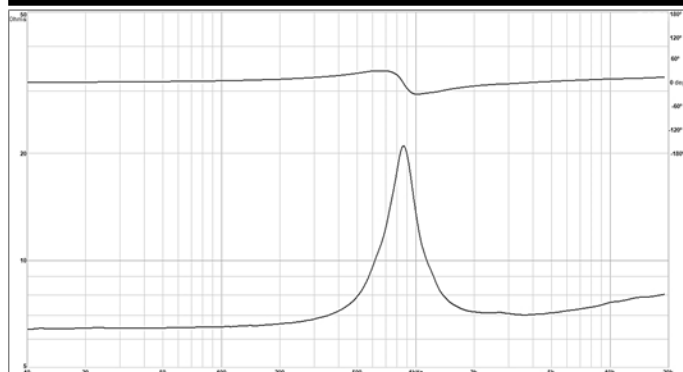
LD25X – 25mm XBL^2 Tweeter



Features

- XBL^2 spilt gap motor provides increased magnetic gap strength and size for lower distortion over a larger range of operation
- Copper cap reduces voice coil inductance and distortion, extending to end response
- 25mm silk dome provides smooth performance
- Anodized precision CNC faceplate with integrated gasket provides attractive high end look and feel

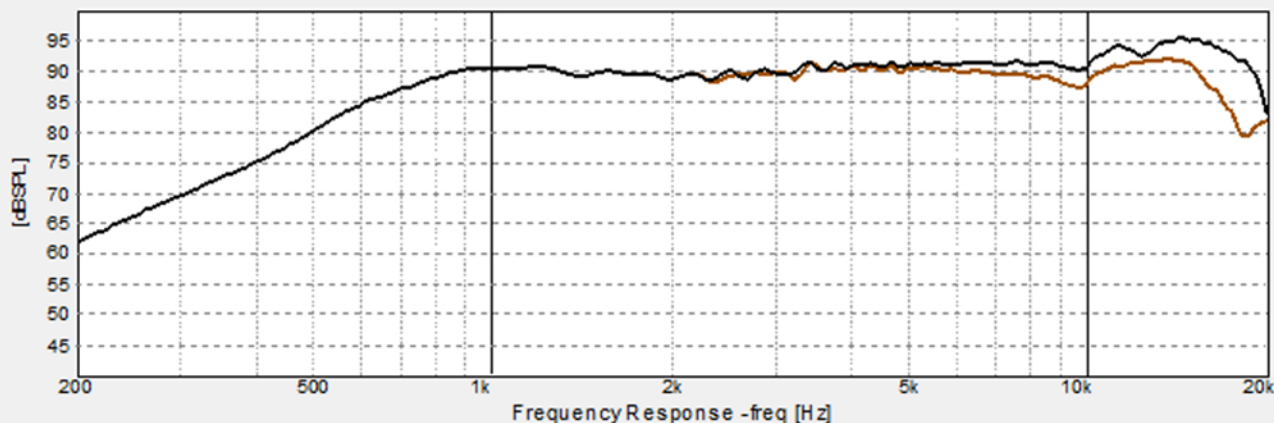
Impedance



Specifications

Impedance	8 Ohm
Re	6.4 Ohm
Le (at 10 kHz)	0.066 mH
Fs	865 Hz
Qms	4.21
Qes	1.85
Qts	1.28
Mms	0.18 g
Bl	2.76
Sd	5.3 cm ²
Vas	0.01 L
Cms	0.2 mm/N

Frequency Response – Infinite baffle, 2.83 V



[1.5dB] 30

[1.5dB] 0

LD25X @ 2.83V/1m on infinite baffle 0 - 30 degrees