

Box Properties

--Description--

Name:

Type: Passive Radiator Box

Shape: Prism, square

--Box Parameters--

Vb = 0.6 cu.ft

V(total) = 0.654 cu.ft

QL = 7

F3 = 43.82 Hz

Fill = normal

--Passive Radiators--

No. of Passive Radiators = 1

Fs = 11 Hz

Qms = 14

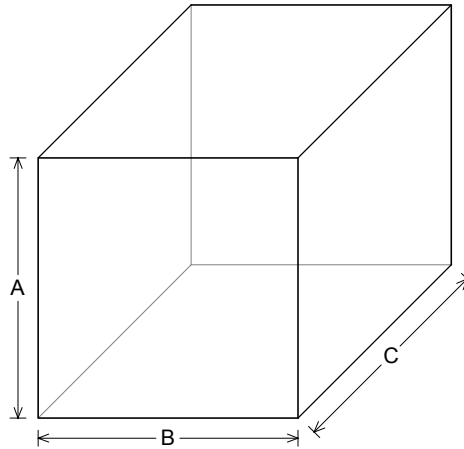
Vas = 80 liters

Cms = 0.5 mm/N

Mms = 400 g

Rms = 2 kg/s

Sd = 333 sq.cm



--External Dimensions--

A = 12 in

B = 12 in

C = 13.31 in

--Internal Dimensions--

A = 10 in

B = 10 in

C = 11.31 in

--Wall Thickness--

Front = 1 in

Side = 1 in

Driver Properties

--Description--

Name: 26W/4558T00

Type: Standard one-way driver

Company: Scan-Speak A/S

--Configuration--

No. of Drivers = 1

--Mechanical Parameters--

Fs = 21 Hz

Qms = 5.56

Vas = 94.9 liters

Cms = 0.55 mm/N

Mms = 105 g

Rms = 2.478 kg/s

Xmax = 12.5 mm

Xmech = 18.75 mm

P-Dia = 210.7 mm

Sd = 352 sq.cm

P-Vd = 0.436 liters

--Electrical Parameters--

Qes = 0.33

Re = 2.6 ohms

Le = 0.83 mH

Z = 4 ohms

BL = 10.5 Tm

Pe = 350 watts

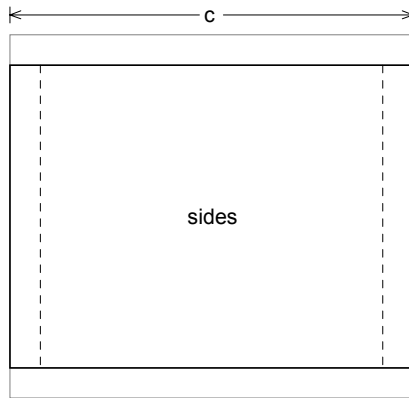
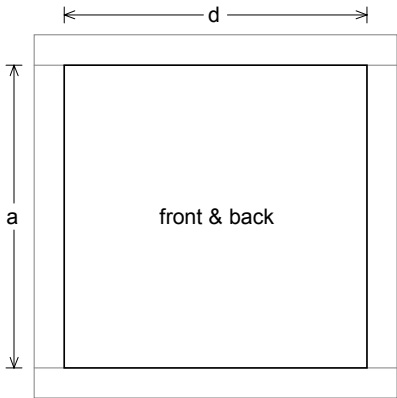
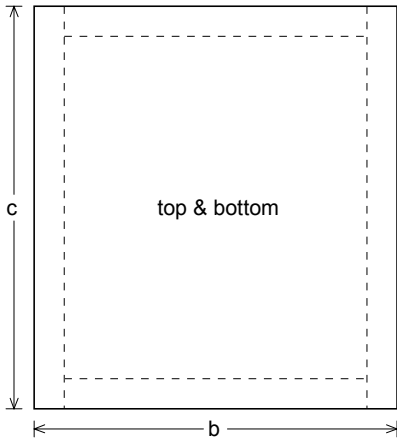
--Electromech. Parameters--

Qts = 0.31

no = 0.257 %

1-W SPL = 86.24 dB

2.83-V SPL = 88 dB



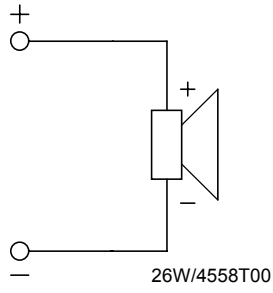
Box Parts

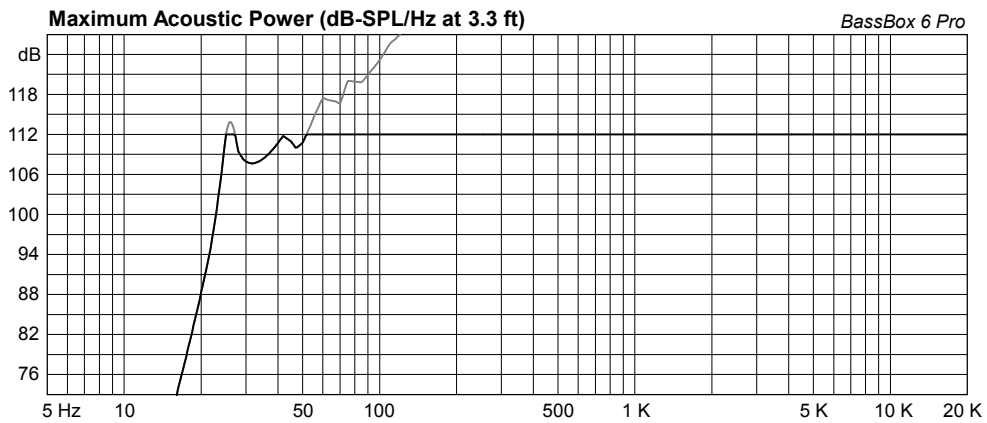
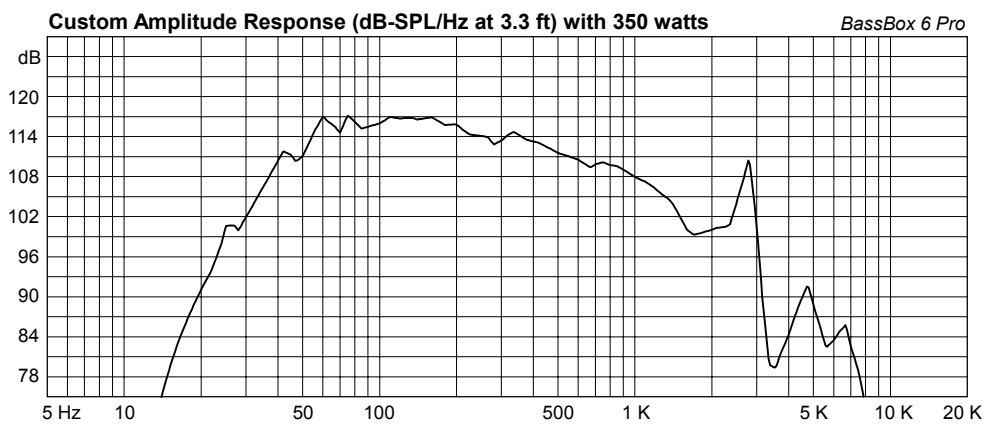
- Box Shape: Square Prism
- 1 Top, 1 Bottom: depth (c) = 13.31 in
width (b) = 12, thickness = 1 in
- 1 Front, 1 Back: height (a) = 10 in
width (d) = 10, thickness = 1 in
- 2 Sides: height (a) = 10 in
depth (c) = 13.31, thickness = 1 in

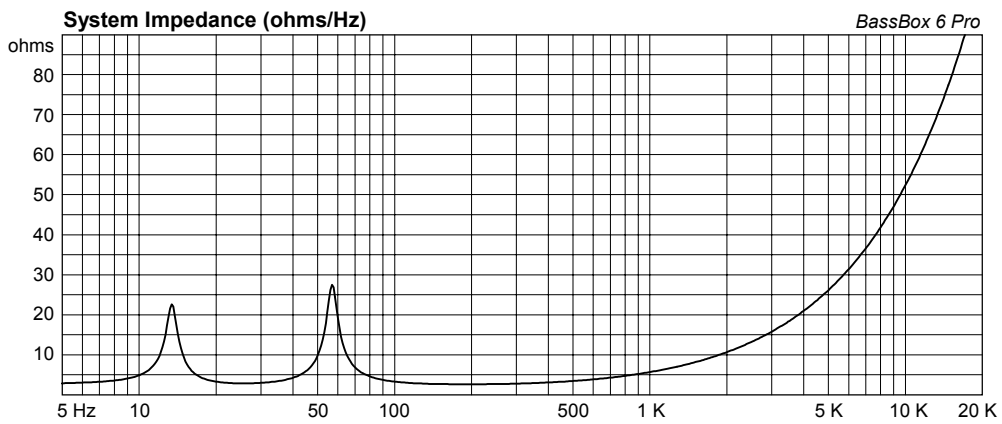
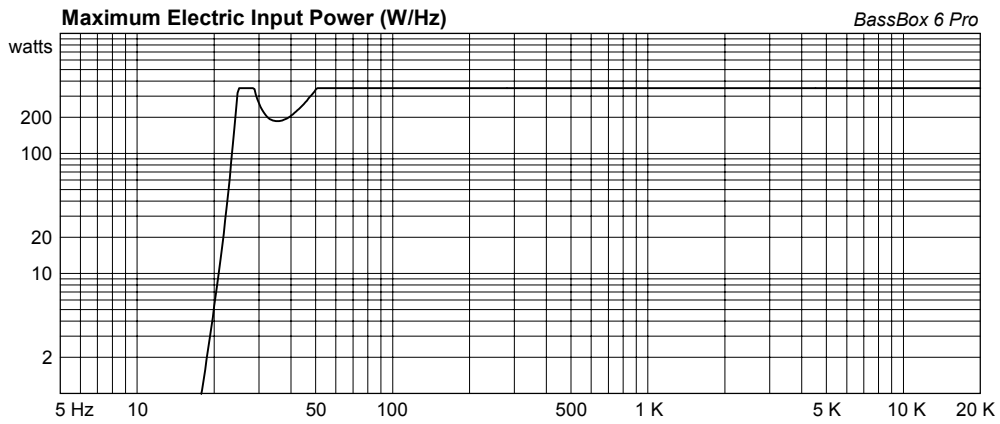
--Driver Mounting--
Mounting: Flush

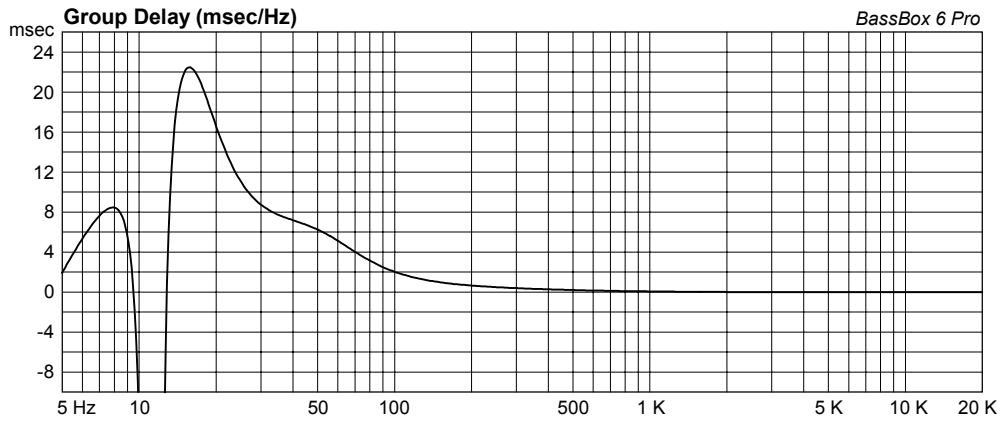
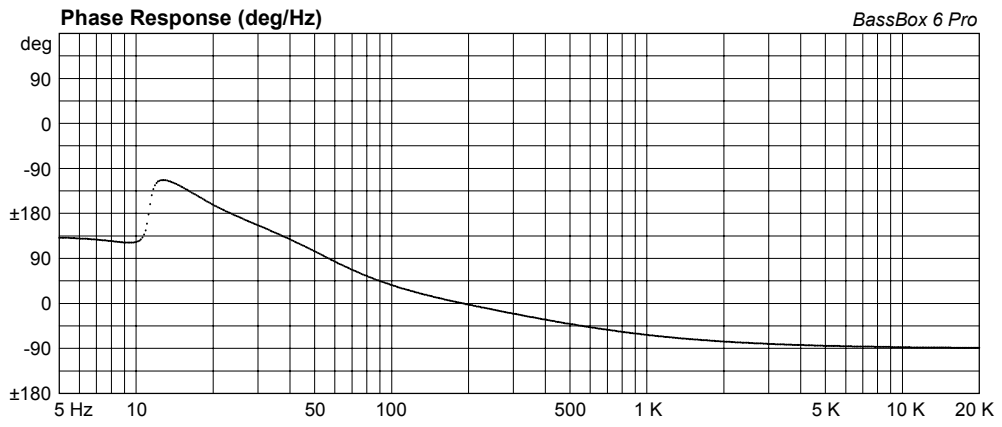


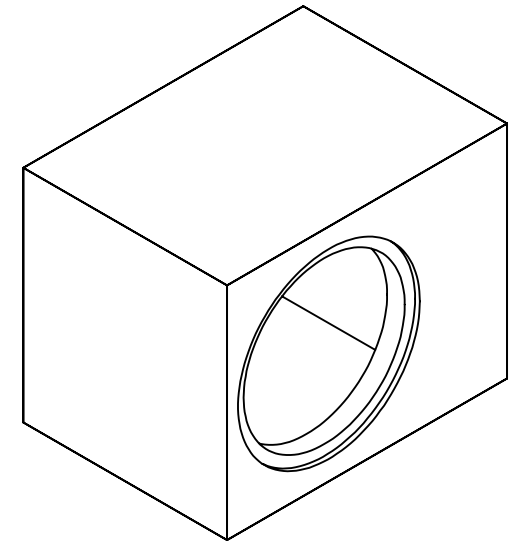
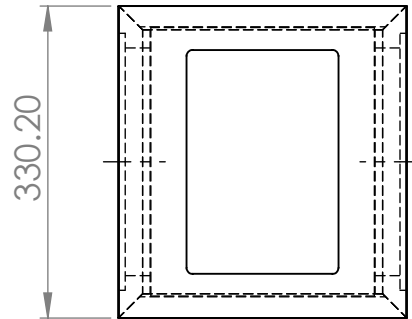
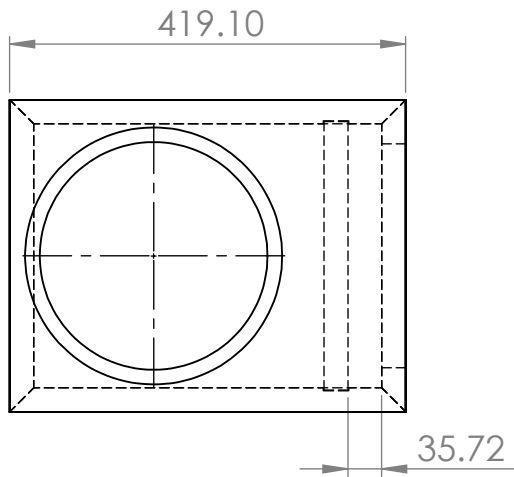
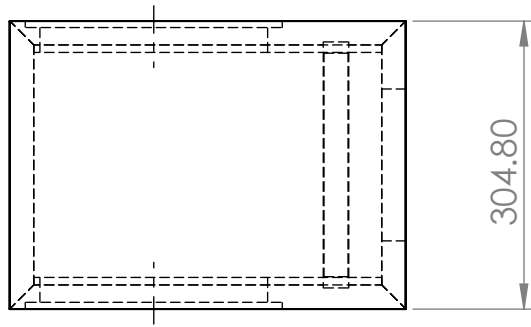
Wiring Diagram



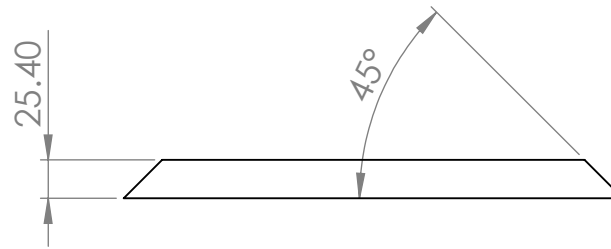
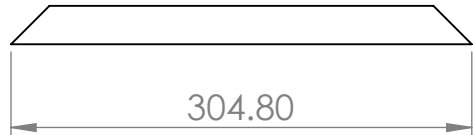
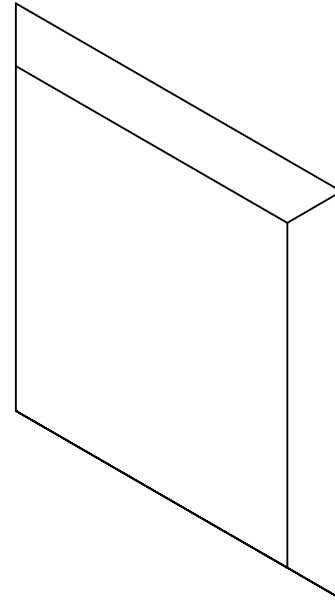
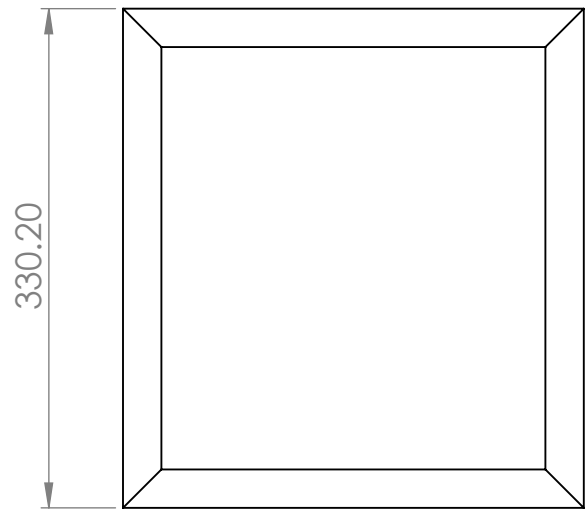


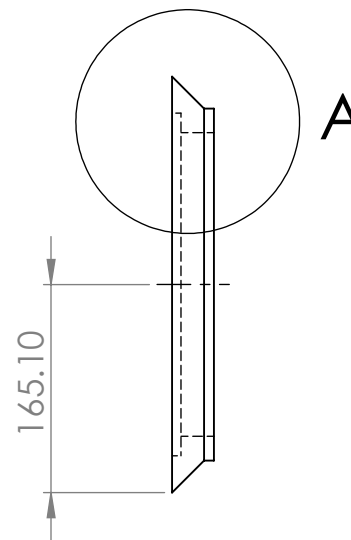
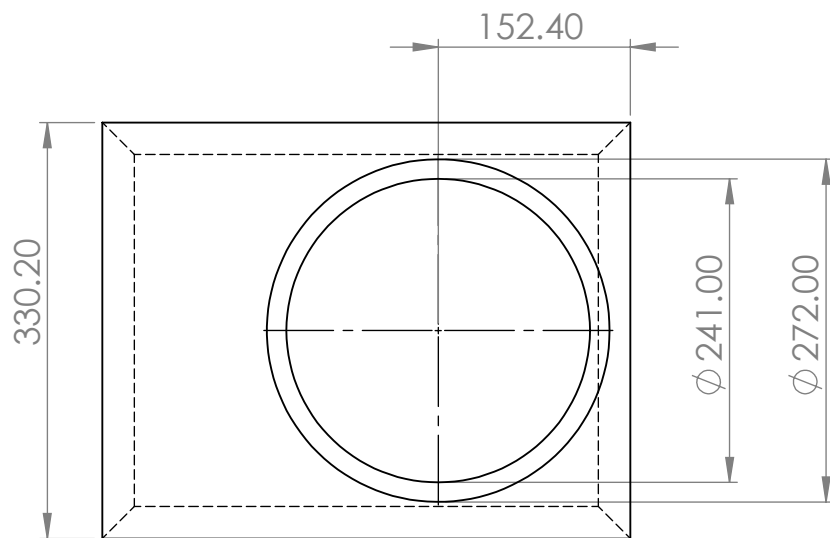
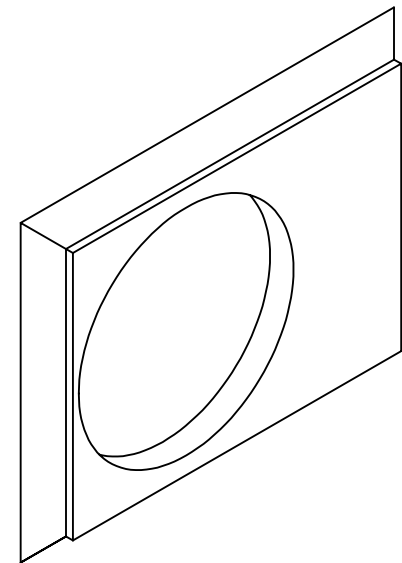
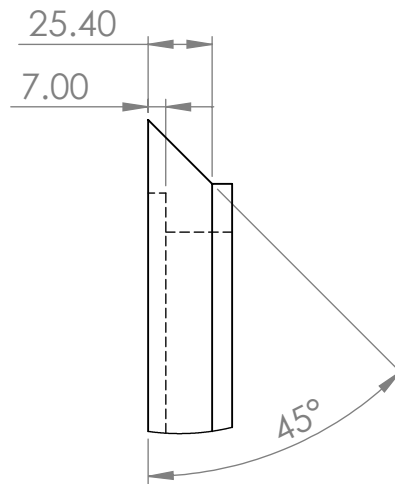
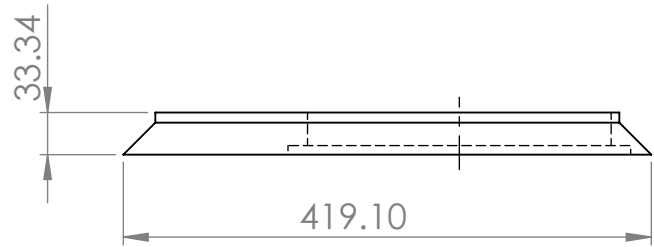


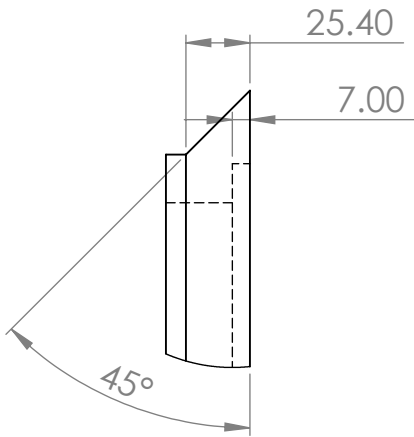




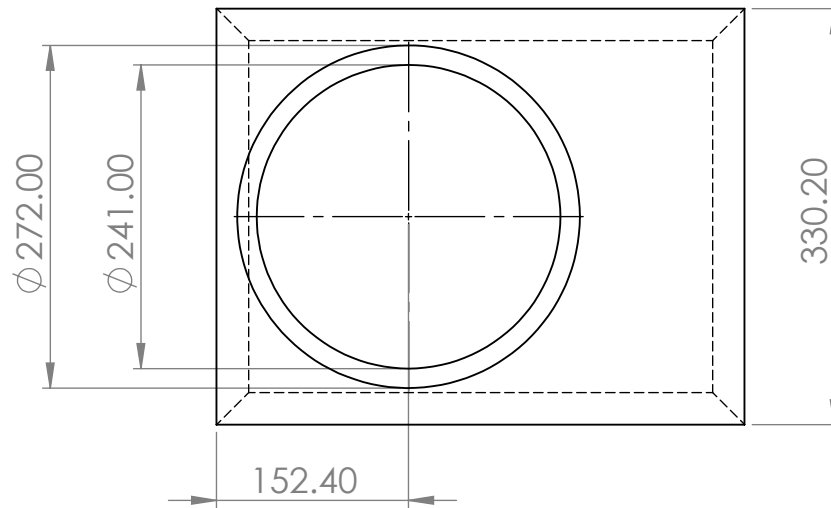
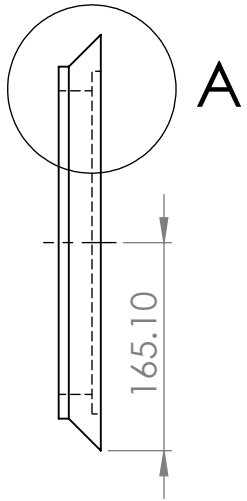
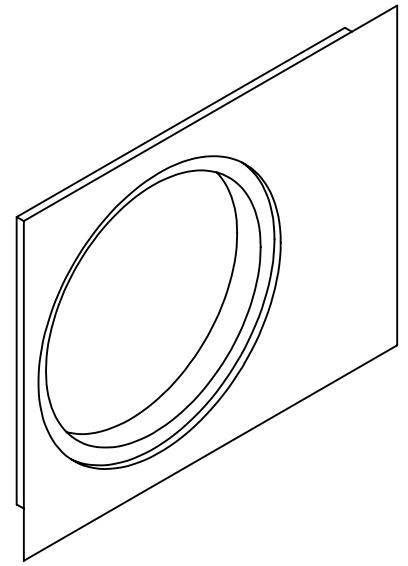
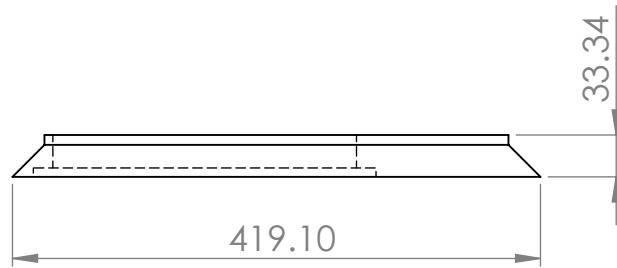
ITEM NO.	PART NUMBER	DESCRIPTION	QTY.
1	XXLS10 - TOP & BOTTOM		2
2	XXLS10 - FRONT		1
3	XXLS10 - BACK		1
4	XXLS10 - LEFT		1
5	XXLS10 - RIGHT		1
6	XXLS10 - BRACE		1

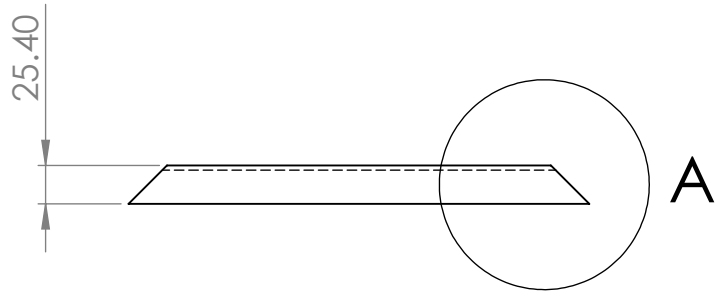
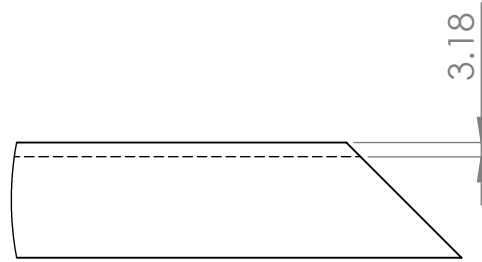
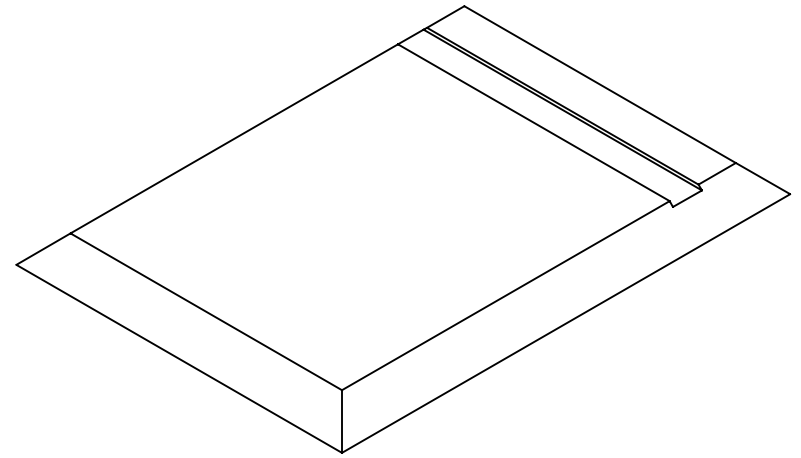
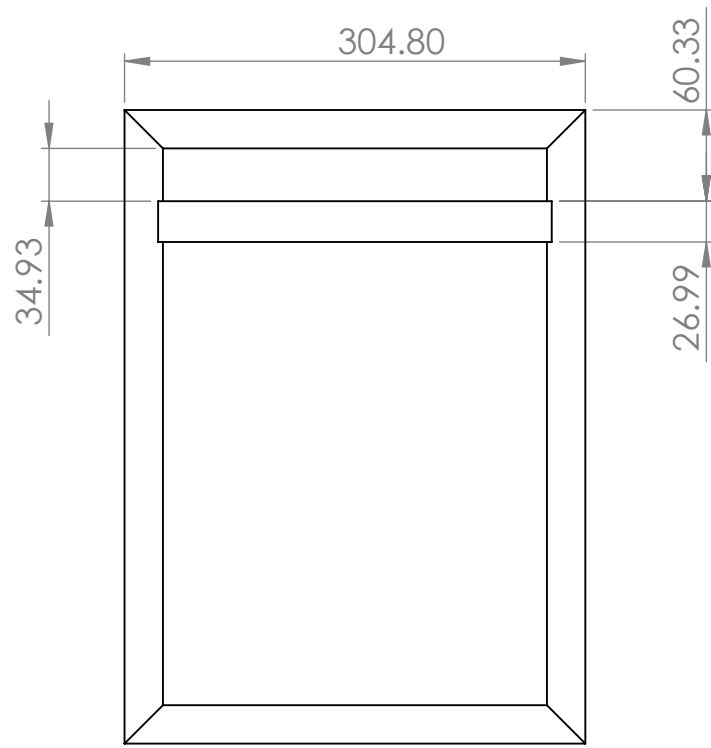






DETAIL A
SCALE 1 : 3





DETAIL A
SCALE 3 : 5

