

ARI20-6

PATENTED RIBBON TWEETER





ATLAS AR120

PATENTED

HYBRID RIBBON TWEETER

Experience the world of audio with a new level of precision and clarity. The Atlas patented ribbon tweeter will elevate your listening experience, transforming the way you hear music. From the delicate intricacies of acoustic guitar to the soaring highs of a symphony, every detail is reproduced in stunning accuracy.

Patented Design

Frequency range: 1400Hz ~ 32kHz

Flat response: 1.4kHz ~ 20kHz (+/-2dB)

Reliable crossover point @ 1.5kHz (@ 24/dB Oct)

Sensitivity: 91dB @ 1 W / 1 m

THD: 1.4kHz~15kHz < 1%

Rated power: 25VA

Pre-installed gasket for secure installation.

Mounting screws and copper terminal connectors included.

Why Choose Atlas Ribbon Tweeters?

The Atlas ribbon tweeter is a precision instrument that is engineered for true sonic excellence.

Superior Build Quality:

Atlas ribbon tweeters are crafted using the finest materials to ensure durability and performance. The Atlas ribbon tweeters are engineered and constructed to provide long-term reliability.

Low Distortion:

The engineering behind the Atlas ribbon tweeter minimizes distortion, even at extreme volumes, ensuring that every note, no matter how high or soft, is rendered with absolute accuracy. The result is pure sound reproduction that retains the integrity of your music.

Dynamic Range:

Due to its patented design, the Atlas ribbon tweeter has a very extended frequency range, offering smooth and consistent highs that are always dynamic and rich.

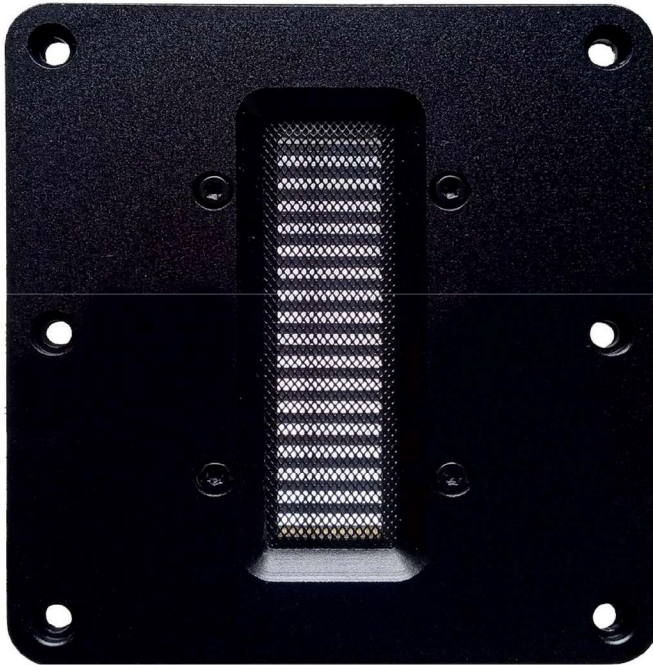
Solen Électronique Inc.

3940 Boul Sir-Wilfrid-Laurier St-Hubert, Qc, J3Y 6T1, Canada

Ph: 450 656-2759

Website: solen.ca

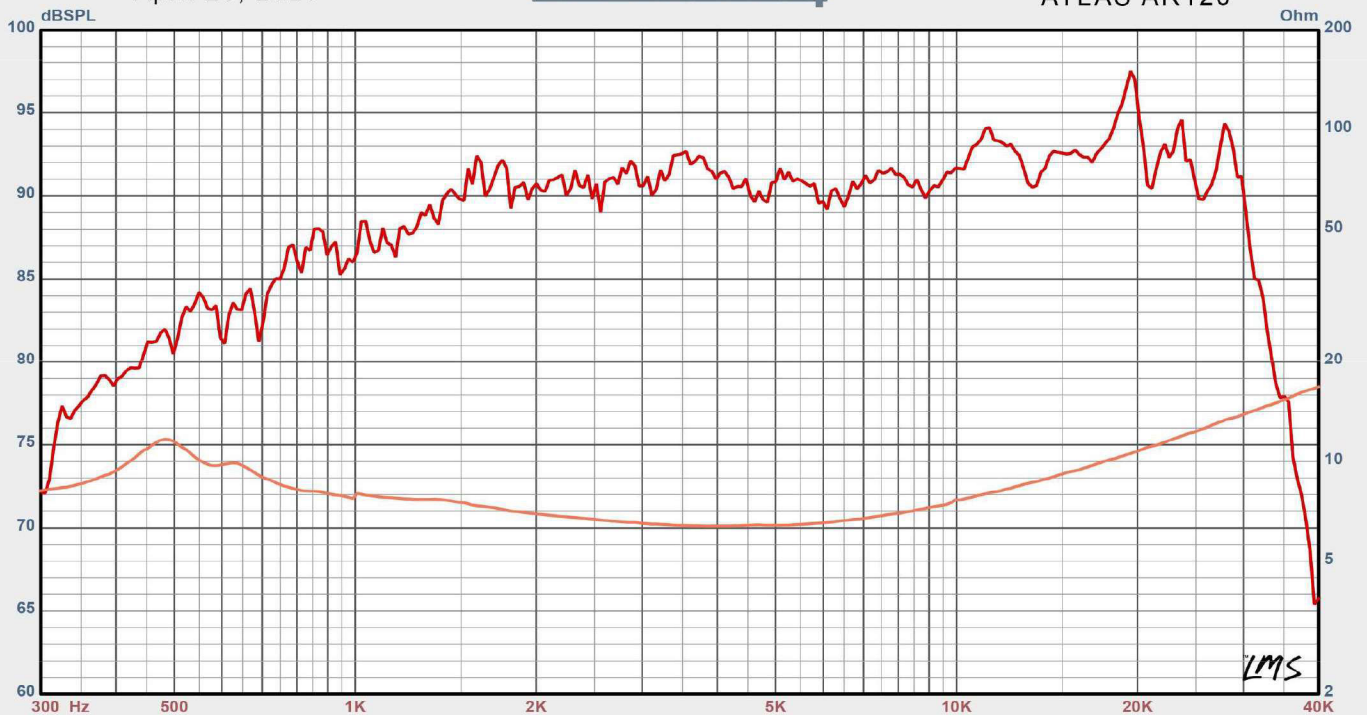
ATLAS PATENTED HYBRID RIBBON TWEETER



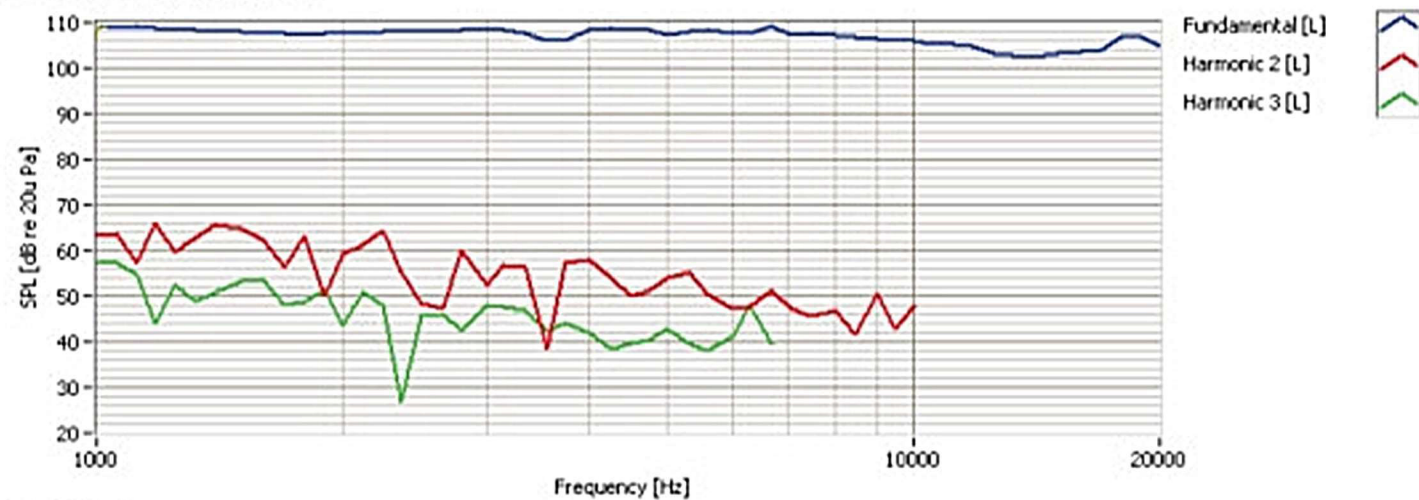
April 25, 2025

SPL vs Freq

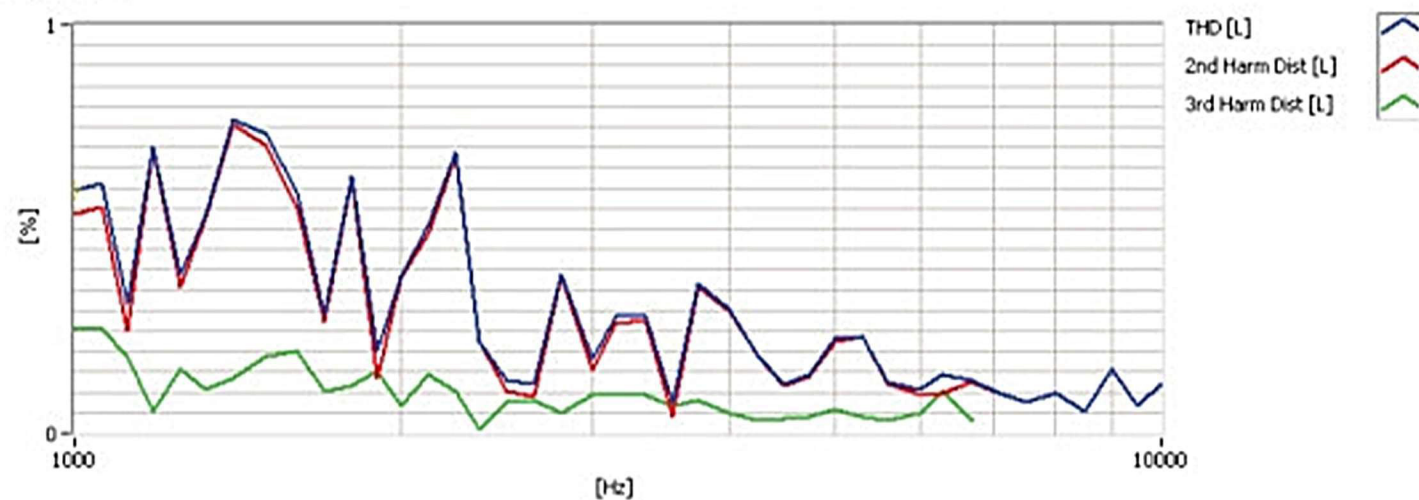
ATLAS AR120



Response and Harmonics

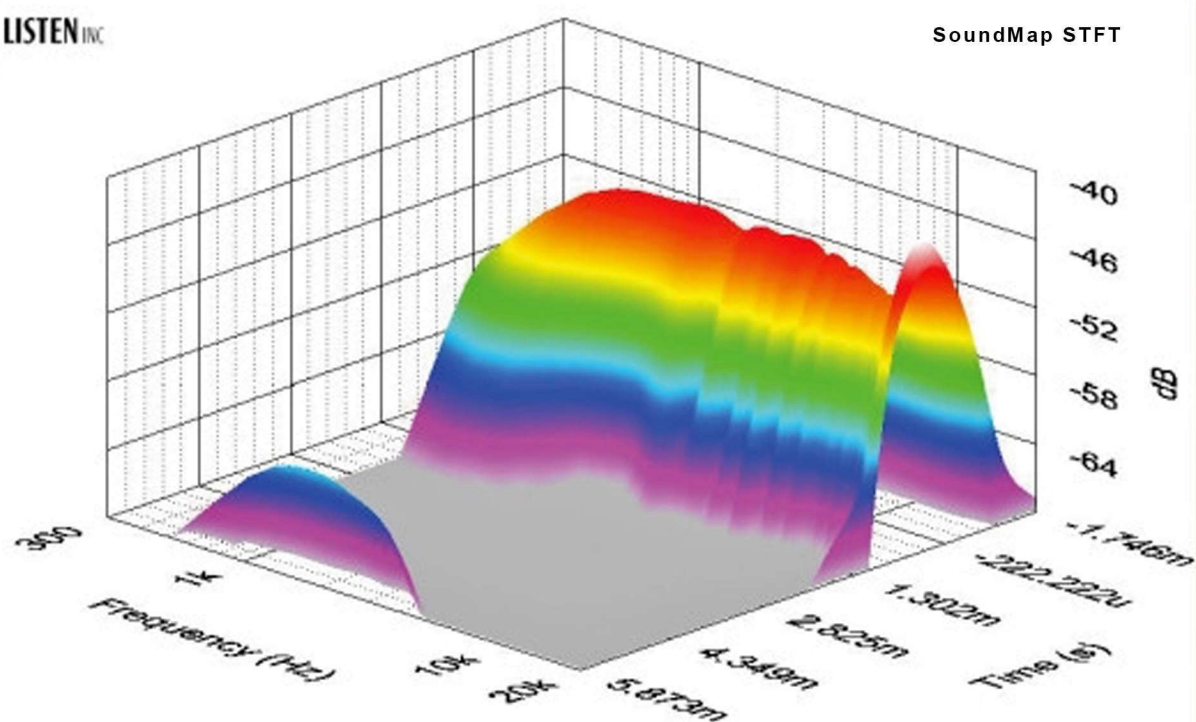


Distortion



LISTEN INC

SoundMap STFT



Website: solen.ca

HYBRID RIBBON TWEETER

