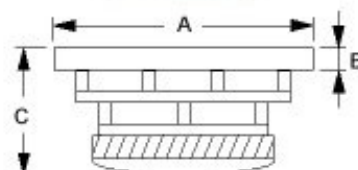




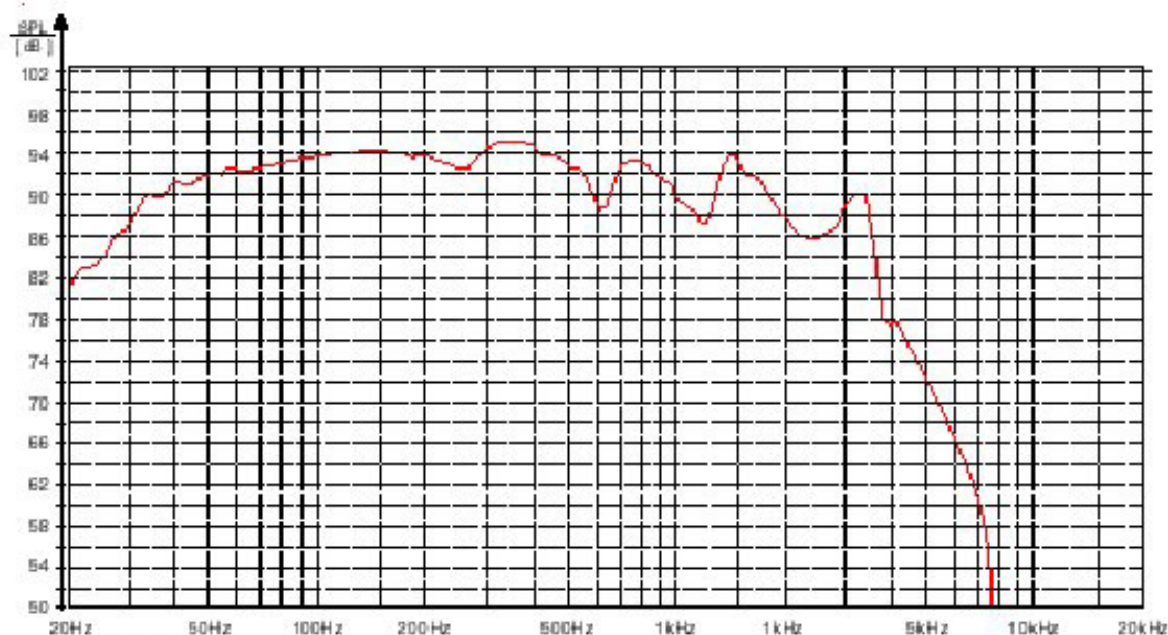
# 15E1022510



<b>Effective Cone Area</b>	<b>835 Cm<sup>2</sup></b>
<b>Nominal Impedance</b>	<b>8 Ohms</b>
<b>Resonance Frequency</b>	<b>20 Hz</b>
<b>Equivalent Air Volume</b>	<b>470 Ltrs.</b>
<b>Mecanical Q Factor</b>	<b>2.0</b>
<b>Electrical Q Factor</b>	<b>0.28</b>
<b>Total Q Factor</b>	<b>0.25</b>
<b>Acceleration Factor</b>	<b>135</b>
<b>Nominal Power Handling</b>	<b>400 W</b>
<b>Sensitivity</b>	<b>93 dB</b>
<b>Frequency Response</b>	<b>23-900 Hz</b>
<b>DC Resistance</b>	<b>5.4 Ohms</b>
<b>Compliance</b>	<b>0.4815 mm/Nm</b>
<b>Mechanical res.</b>	<b>8.263</b>
<b>VC Inductance</b>	<b>1.13 mH</b>
<b>Moving Mass</b>	<b>131.52 g</b>
<b>Force Factor</b>	<b>17.67</b>
<b>Linear Excursion (X-max)</b>	<b>8.6 mm</b>
<b>Max Excursion (P-P)</b>	<b>46 mm</b>



**A = 410 mm**  
**B = 13 mm**  
**C = 160 mm**  
**Weight = 13.4 kg**



15E1022510