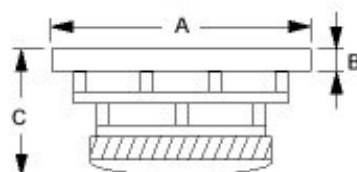


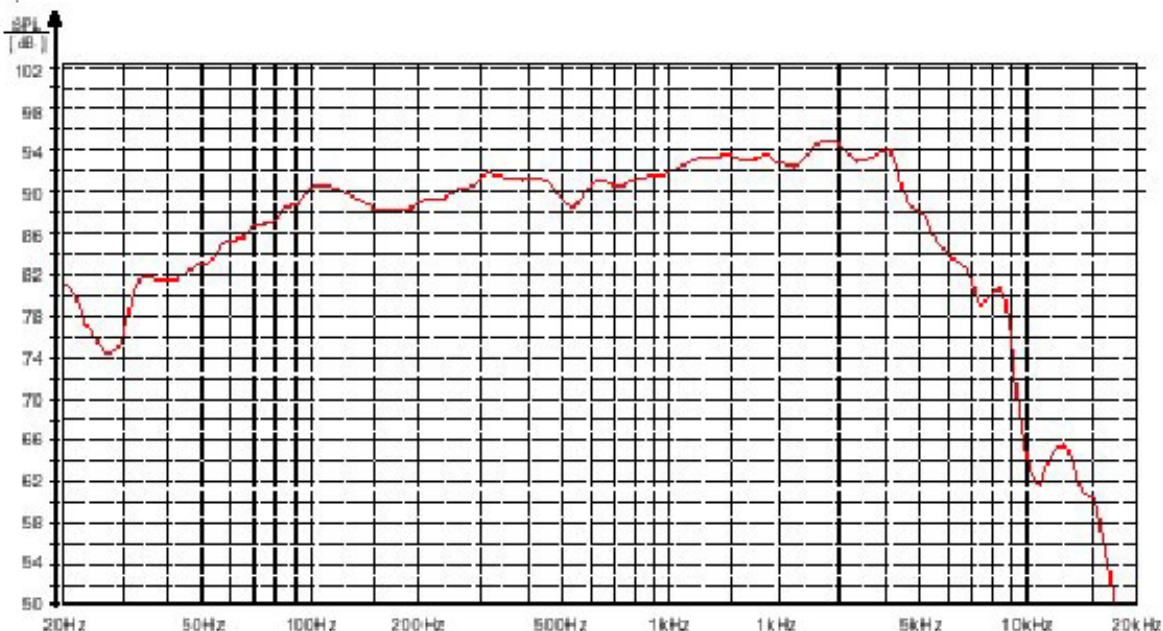


# 5H521506

<b>Effective Cone Area</b>	<b>137 Cm<sup>2</sup></b>
<b>Nominal Impedance</b>	<b>8 Ohms</b>
<b>Resonance Frequency</b>	<b>40 Hz</b>
<b>Equivalent Air Volume</b>	<b>23,5 Ltrs.</b>
<b>Mecanical Q Factor</b>	<b>1.8</b>
<b>Electrical Q Factor</b>	<b>0.39</b>
<b>Total Q Factor</b>	<b>0.32</b>
<b>Acceleration Factor</b>	<b>499</b>
<b>Nominal Power Handling</b>	<b>150 W</b>
<b>Sensitivity</b>	<b>89 dB</b>
<b>Frequency Response</b>	<b>42-4300 Hz</b>
<b>DC Resistance</b>	<b>5.6 Ohms</b>
<b>Compliance</b>	<b>1.0346 mm/Nm</b>
<b>Mechanical res.</b>	<b>2.038</b>
<b>VC Inductance</b>	<b>0.13 mH</b>
<b>Moving Mass</b>	<b>14.6 g</b>
<b>Force Factor</b>	<b>7.26</b>
<b>Linear Excursion (X-max)</b>	<b>5.2 mm</b>
<b>Max Excursion (P-P)</b>	<b>32 mm</b>



**A = 180 mm**  
**B = 8 mm**  
**C = 33 mm**  
**Weight = 2.5 kg**



5H521506SD