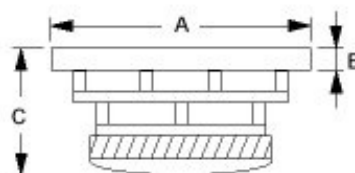


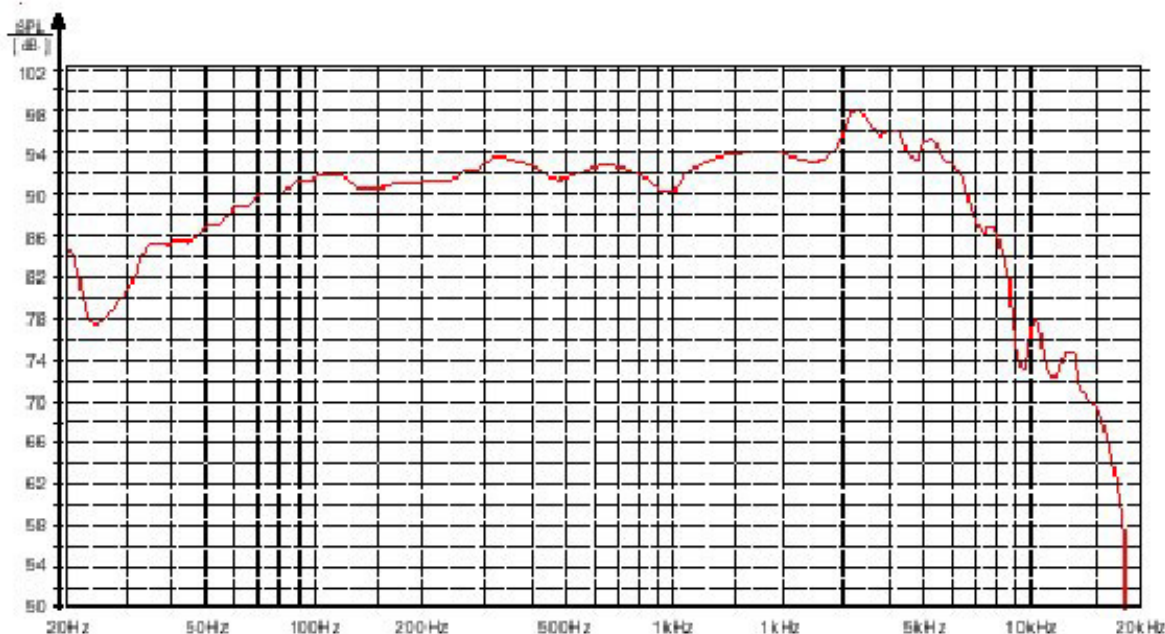


# 81522008

<b>Effective Cone Area</b>	<b>230 Cm<sup>2</sup></b>
<b>Nominal Impedance</b>	<b>8 Ohms</b>
<b>Resonance Frequency</b>	<b>24 Hz</b>
<b>Equivalent Air Volume</b>	<b>165 Ltrs.</b>
<b>Mecanical Q Factor</b>	<b>1.57</b>
<b>Electrical Q Factor</b>	<b>0.28</b>
<b>Total Q Factor</b>	<b>0.24</b>
<b>Acceleration Factor</b>	<b>414</b>
<b>Nominal Power Handling</b>	<b>180 W</b>
<b>Sensitivity</b>	<b>91 dB</b>
<b>Frequency Response</b>	<b>35-3500 Hz</b>
<b>DC Resistance</b>	<b>6.3 Ohms</b>
<b>Compliance</b>	<b>2.2279 mm/Nm</b>
<b>Mechanical res.</b>	<b>1.896</b>
<b>VC Inductance</b>	<b>0.06 mH</b>
<b>Moving Mass</b>	<b>19.74 g</b>
<b>Force Factor</b>	<b>8.18</b>
<b>Linear Excursion (X-max)</b>	<b>9 mm</b>
<b>Max Excursion (P-P)</b>	<b>38 mm</b>



**A = 230 mm**  
**B = 8 mm**  
**C = 101 mm**  
**Weight 3.6 kg**



81522008SD