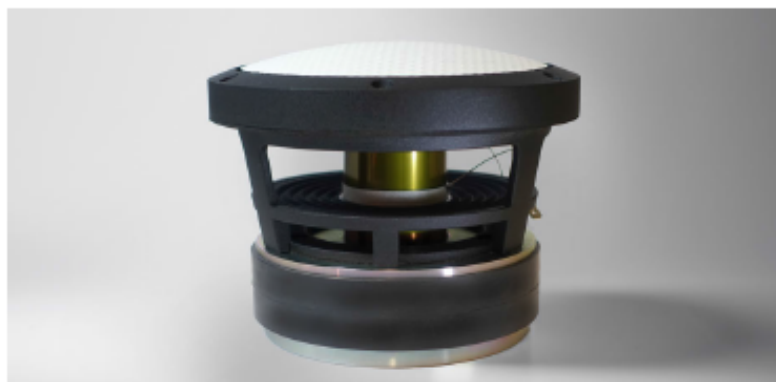


# ALUMINIUM-SANDWICH

## MAIN FEATURES

- ▶ FULL FEATURED CELL CONCEPT
- ▶ IDEAL ACOUSTICAL CENTER
- ▶ NO COMPRESSION DESIGN
- ▶ PROPRIETARY MOTOR SYSTEM
- ▶ 35 HZ - 1000 HZ IN VENTED BOX



### AS168-9-470 CELL ALUMINIUM-SANDWICH BASS DRIVER

|                         |                    |
|-------------------------|--------------------|
| DOMEMATERIAL            | Aluminium-Sandwich |
| APPLICATION             | Bass               |
| OVERALL DIAMETER        | 168 mm             |
| CUTOUT DIAMETER/SQUARE  | 148 mm             |
| OVERALL DEPTH           | 118 mm             |
| MOTOR ASSEMBLY DEPTH    | 43 mm              |
| MOTOR ASSEMBLY DIAMETER | 135 mm             |

## AS168-9-470

The **AS168-9-470** is an 7 inch bass driver with aluminum honeycomb sandwich dome, being the first in an entirely new approach to accuton speaker design. An ideal acoustical center has been achieved, which is identical with our **CELL** tweeters and midranges. Its novel designed overhung motor combines the advantages of traditional over- and underhung designs, delivering high linear excursion and ultra low distortion. An exceptionally hard aluminum sandwich dome was developed for the **CELL** bass drivers that allows for negligible delay and energy storage. The hidden surround serves for reduced outer diameter and linear excursion of +/- 16mm. A new developed spider shape makes huge excursion without compression possible.

We recommend our **AS168-9-470** for an application from 35 Hz - 1000 Hz.

#### MECHANICAL DATA

| SPECIFICATION             | VALUE                         | UNIT |
|---------------------------|-------------------------------|------|
| OVERALL DIAMETER          | 168                           | mm   |
| CUTOUT DIAMETER/SQUARE    | 148                           | mm   |
| MIN. FRONTPLATE THICKNESS | 16                            | mm   |
| OVERALL DEPTH             | 118                           | mm   |
| MOTOR ASSEMBLY DEPTH      | 43                            | mm   |
| MOTOR ASSEMBLY DIAMETER   | 135                           | mm   |
| SCREWFITTING              | DIN 7984, Ø 4,50              | mm   |
| TERMINAL                  | + : 6.3 x 0.8 / - : 4.8 x 0.8 | mm   |
| SHIPPING WEIGHT (PAIR)    | 8.4                           | kg   |
| SHIPPING BOX SIZE (PAIR)  | 225 / 225 / 370               | mm   |

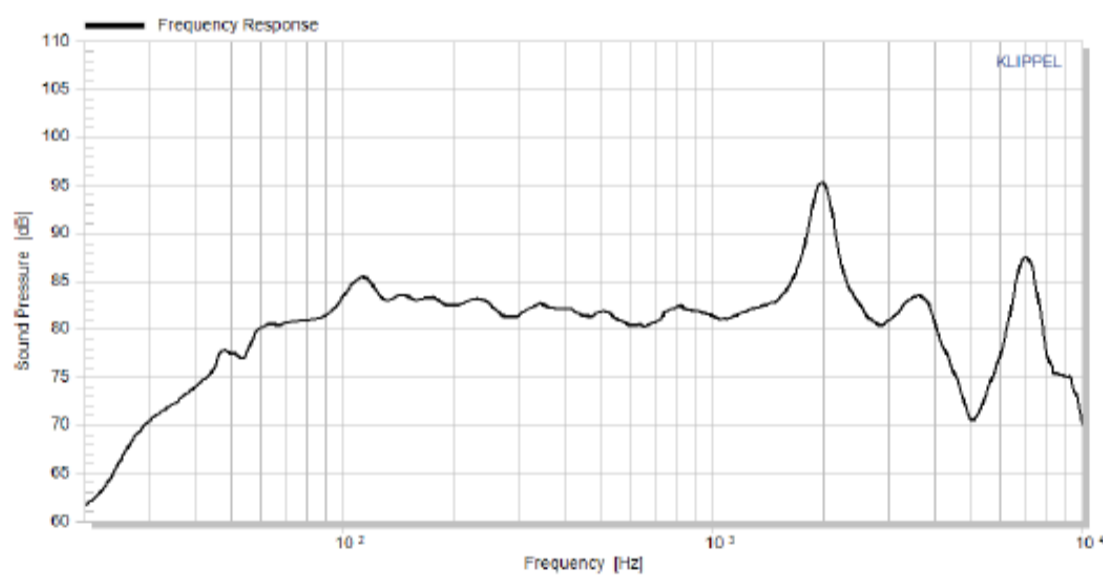
#### THIELE/SMALL PARAMETERS

| SPECIFICATION            |     | VALUE | UNIT            |
|--------------------------|-----|-------|-----------------|
| SENSITIVITY (2.83V / 1M) | Lp  | 84    | dB              |
| DC-RESISTANCE            | Re  | 9     | Ohm             |
| RESONANCE FREQUENCY      | Fs  | 27    | Hz              |
| EQUIVALENT VOLUME OF AIR | Vas | 35.5  | L               |
| MECHANICAL Q             | Qms | 4.35  |                 |
| ELECTRICAL Q             | Qes | 0.38  |                 |
| TOTAL Q                  | Qts | 0.35  |                 |
| EFFECTIVE PISTON AREA    | Sd  | 161   | cm <sup>2</sup> |
| MOVING MASS              | Mms | 36    | g               |
| SUSPENSION COMPLIANCE    | Cms | 0.97  | mm/N            |
| MECHANICAL RESISTANCE    | Rms | 1.4   | kg*s            |

#### VOICE COIL PARAMETERS

| SPECIFICATION              |      | VALUE      | UNIT |
|----------------------------|------|------------|------|
| POWER HANDLING             | P    | 250        | Watt |
| LINEAR EXCURSION           | Xmax | +/- 8      | mm   |
| VOICE COIL DIAMETER        |      | 47         | mm   |
| VOICE COIL FORMER MATERIAL |      | Ti         |      |
| VOICE COIL MATERIAL        |      | CCAW       |      |
| VOICE COIL INDUCTANCE      | Le   | 1.0        | mH   |
| FORCE FACTOR               | Bl   | 12.1       | N/A  |
| MOTOR TYPE                 |      | überhängig |      |
| FERROFLUID FILLING         |      | Nein       |      |

#### FREQUENCY RESPONSE [DB]



#### IMPEDANCE [OHM]

