

## SPECIFICATIONS

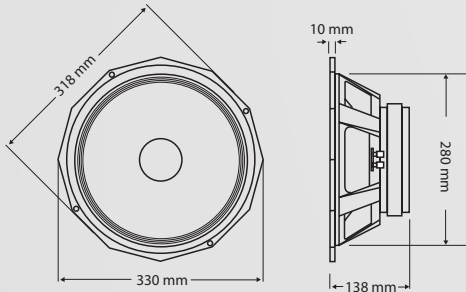
Nominal Diameter	30 cm (12")
Voice Coil Diameter	76 mm (3")
Nominal Impedance	4,8 or 16 Ohms
Power Rating	400 Watts (AES)
Sensitivity (1w / 1m)	96 dB
Frequency Range	45 Hz -3.5 kHz
Recommended Enclosure Volume	25-75 Litres
Displacement Limit (peak-peak)	24 mm (0.94")
Resonance	50 Hz
Voice Coil	Copper
Voice Coil Winding Depth	19 mm (0.74")
Magnet Gap Depth	9 mm (0.36")
Magnet Material	Ceramic
Magnet Weight	2.4 Kg (85 oz.)
Flux Density	1.1 T
Dust Dome Material	Paper
Suspension Material	Fabric
Cone / Surround Material	Paper/Cloth

## THIELE SMALL PARAMETERS

Fs	50.238 Hz
Re	5.493 Ohms
Qts	0.297
Qms	5.024
Qes	0.316
Vas	58.945 Litres
Mms	67.410 g
Sd	530.93 cm <sup>2</sup>
Cms	148.887 µm/N
BL	19.228 T/m
Xmax	7.00 mm
Vd	0.372 Litres
Reference Efficiency	2.28 %

## MOUNTING AND SHIPPING INFORMATION

Fixing Holes	x 4 Fixing Holes M6 x 8 Concealed M6
Nett Weight	7.9 Kg (17.4 lb.)
Shipping Weight	8.8 Kg (19.40 lb.)



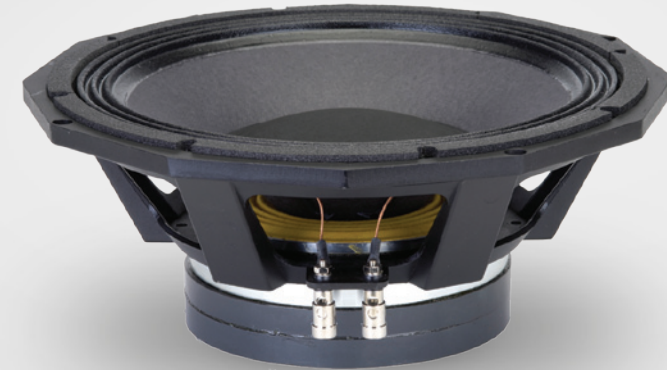
The ultimate 12" sub bass transducer.

The PD. 12SB30 is the perfect choice for an extended low-frequency response and high SPL applications. Ideal for bandpass applications and extended throw designs.

Also excels in compact two-way cabinets giving extended low frequency reproduction.

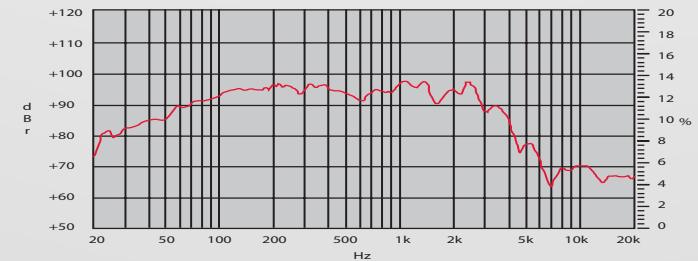
- Heavy duty cast aluminium frame with extra wide flange for increased rigidity
- Sub Woofer
- Field replaceable magnet for touring applications
- 400 WRMS (AES)
- 3" copper voice coil assembly
- 85 oz. ceramic magnet

# PD.12SB30

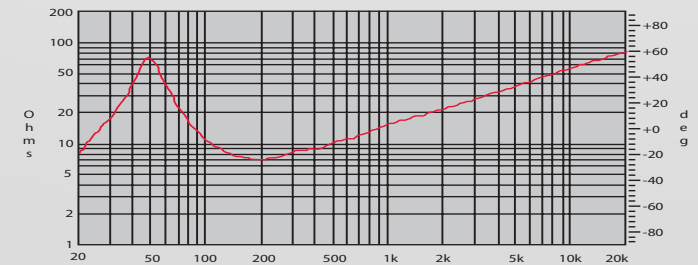


# PD.12SB30

FREQUENCY RESPONSE DATA:



IMPEDANCE:



Half space response measured in a 975 Litre sealed box

Please note that frequency response measurements are supplied for comparison purposes only and are not a measure of the low frequency performance which may be achievable in a fully optimised system.