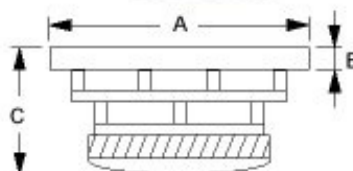


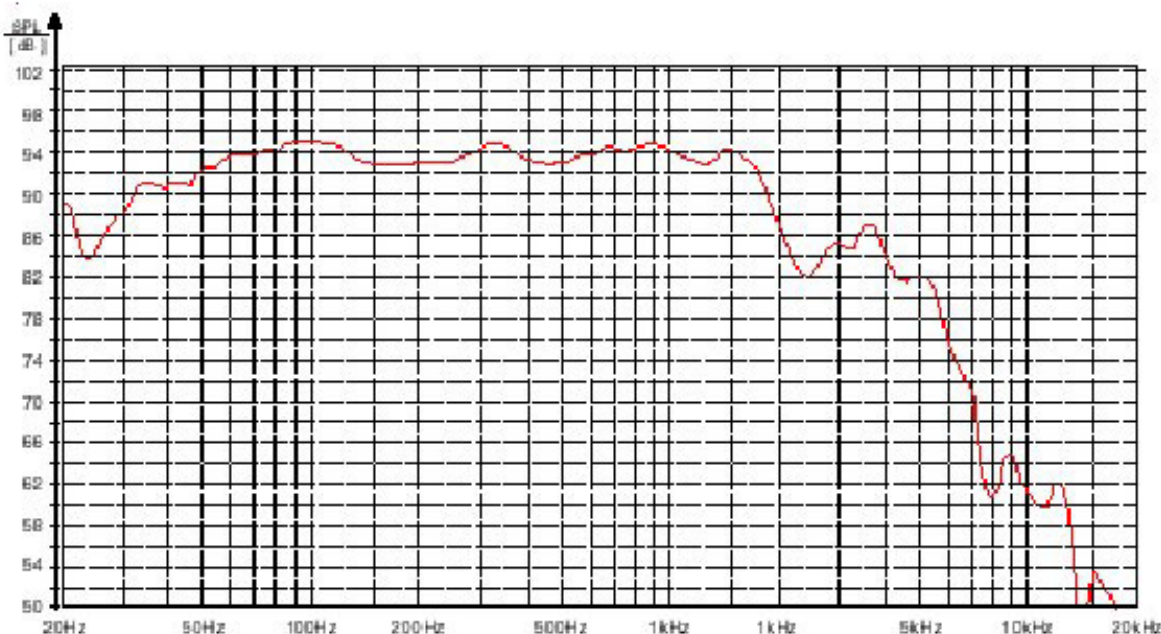


12B772510

Effective Cone Area	515 Cm²
Nominal Impedance	8 Ohms
Resonance Frequency	25 Hz
Equivalent Air Volume	250 Ltrs.
Mecanical Q Factor	2.5
Electrical Q Factor	0.34
Total Q Factor	0.30
Acceleration Factor	203
Nominal Power Handling	250 W
Sensitivity	92 dB
Frequency Resonse	28-1800 Hz
DC Resistance	5.4 Ohms
Compliance	0.6733 mm/Nm
Mechanical res.	3.782
VC Inductance	0.76 mH
Moving Mass	60.2 g
Force Factor	12.24
Linear Exeursion (X-max)	8.6 mm
Max Exeursion (P-P)	48 mm



A = 335 mm
B = 10 mm
C = 159 mm
Weight = 7.9 kg



12B772510