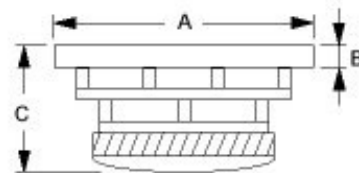




# 6H521706

<b>Effective Cone Area</b>	<b>174 Cm<sup>2</sup></b>
<b>Nominal Impedance</b>	<b>8 Ohms</b>
<b>Resonance Frequency</b>	<b>32 Hz</b>
<b>Equivalent Air Volume</b>	<b>65 Ltrs.</b>
<b>Mecanical Q Factor</b>	<b>1.76</b>
<b>Electrical Q Factor</b>	<b>0.33</b>
<b>Total Q Factor</b>	<b>0.28</b>
<b>Acceleration Factor</b>	<b>458</b>
<b>Nominal Power Handling</b>	<b>160 W</b>
<b>Sensitivity</b>	<b>90 dB</b>
<b>Frequency Response</b>	<b>36-3800 Hz</b>
<b>DC Resistance</b>	<b>5.5 Ohms</b>
<b>Compliance</b>	<b>1.5335 mm/Nm</b>
<b>Mechanical res.</b>	<b>1.843</b>
<b>VC Inductance</b>	<b>0.13 mH</b>
<b>Moving Mass</b>	<b>16.13 g</b>
<b>Force Factor</b>	<b>7.35</b>
<b>Linear Excursion (X-max)</b>	<b>6.5 mm</b>
<b>Max Excursion (P-P)</b>	<b>35 mm</b>



**A = 205 mm**  
**B = 8 mm**  
**C = 97 mm**  
**Weight 2.7 kg**

