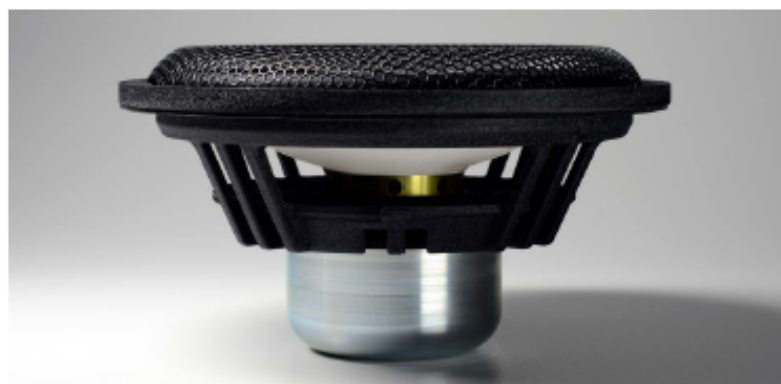


CERAMIC



C220-6-227 CERAMIC BASS-MIDRANGE DRIVER

DOMEMATERIAL	Ceramic
APPLICATION	Bass-Midrange
OVERALL DIAMETER	220 mm
CUTOUT DIAMETER/SQUARE	191 mm
OVERALL DEPTH	109 mm
MOTOR ASSEMBLY DEPTH	46 mm
MOTOR ASSEMBLY DIAMETER	87 mm

MECHANICAL DATA

SPECIFICATION	VALUE	UNIT
OVERALL DIAMETER	220	mm
CUTOUT DIAMETER/SQUARE	191	mm
MIN. FRONTPLATE THICKNESS	9	mm
OVERALL DEPTH	109	mm
MOTOR ASSEMBLY DEPTH	46	mm
MOTOR ASSEMBLY DIAMETER	87	mm
SCREWFITTING	DIN 7984 / \varnothing 4,50	mm
TERMINAL	+ : 6.3 x 0.8 / - : 4.8 x 0.8	mm
SHIPPING WEIGHT (PAIR)	6.9	kg
SHIPPING BOX SIZE (PAIR)	250 / 290 / 250	mm

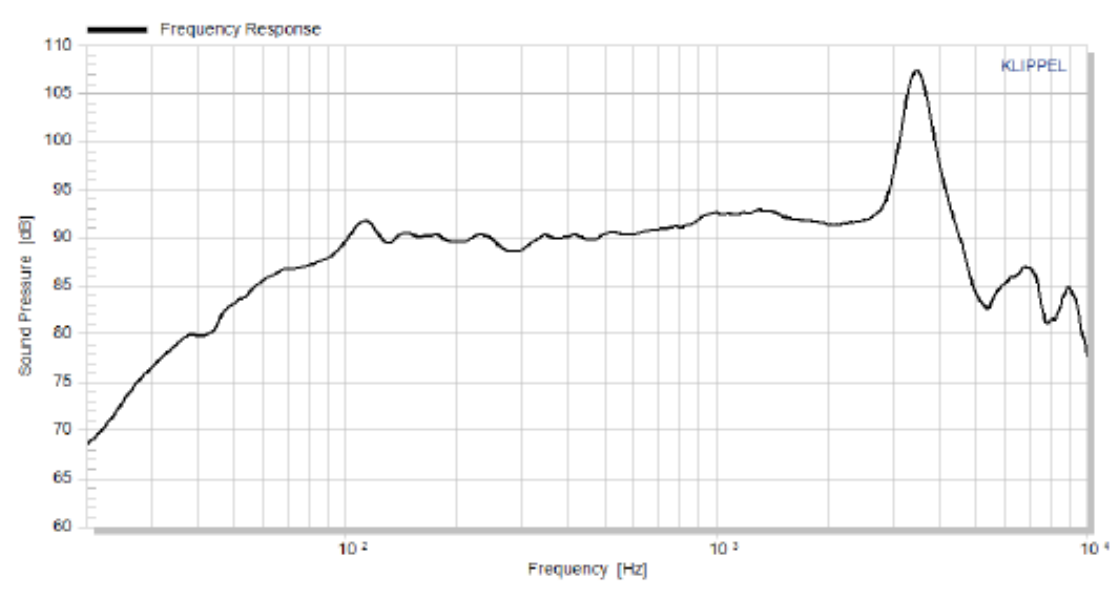
THIELE/SMALL PARAMETERS

SPECIFICATION	VALUE	UNIT
SENSITIVITY (2.83V / 1M)	Lp	89 dB
DC-RESISTANCE	Re	5.6 Ohm
RESONANCE FREQUENCY	Fs	27 Hz
EQUIVALENT VOLUME OF AIR	Vas	79.6 L

MECHANICAL Q	Qms	5.96	
ELECTRICAL Q	Qes	0.34	
TOTAL Q	Qts	0.32	
EFFECTIVE PISTON AREA	Sd	224	cm ²
MOVING MASS	Mms	31.2	g
SUSPENSION COMPLIANCE	Cms	1.12	mm/N
MECHANICAL RESISTANCE	Rms	0.89	kg*s

VOICE COIL PARAMETERS			
SPECIFICATION		VALUE	UNIT
POWER HANDLING	P	120	Watt
LINEAR EXCURSION	Xmax	+/- 6	mm
VOICE COIL DIAMETER		55	mm
VOICE COIL FORMER MATERIAL		Ti	
VOICE COIL MATERIAL		Cu	
VOICE COIL INDUCTANCE	Le	0.23	mH
FORCE FACTOR	Bl	9.3	N/A
MOTOR TYPE		unterhängig	
FERROFLUID FILLING		nein	

FREQUENCY RESPONSE [DB]



IMPEDANCE [OHM]

